



ROCK ISLAND
ILLINOIS

City Council Study Session Agenda
August 25, 2025 - 5:00 PM
City Council Chambers, City Hall, 3rd Floor,
1528 Third Avenue, Rock Island, IL

[Click Here to Watch Live](#)

1. **Call to Order**
2. **Roll Call**
3. **Public Comment**
4. **Presentations**
 - a. Presentation from Christian Care.
 - b. Presentation from Humility Homes.
5. **Adjourn**
 - a.

Motion:	Motion to adjourn.
VV	Voice vote is needed.

This agenda may be obtained in accessible formats by qualified persons with a disability by making appropriate arrangements from 8:00 am to 5:00 pm, Monday through Friday, by contacting the City Clerk's Office at (309) 732-2010 or visiting in person at: 1528 Third Avenue, Rock Island, IL 61201.



“It is our job to rebuild the character & confidence of defeated men & women.”

- Guy Oliver Rodgers -



Christian Care

Founded in 1916



Emergency Shelter



MISSION



MARTHA'S HOUSE





RESCUE MISSION



- ❑ **42 Beds for men.**
- ❑ **6 Beds dedicated to Veterans' Transitional Living.**
- ❑ **3 Beds for RI County Court Systems.**
- ❑ **Serve approximately 200-250 annually.**



MARTHA'S HOUSE



- ❑ **6 Bedroom House located in Broadway District of Rock Island.**
- ❑ **Capacity 20 women & women with children.**
- ❑ **Serve approximately 100 annually.**



Case Management

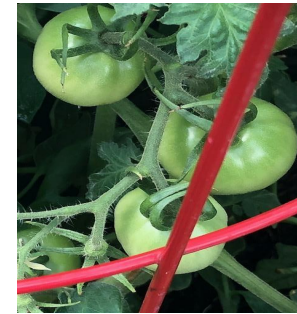


- **Basic needs**
- **Mainstream resources**
- **Barriers to housing**
- **Permanent housing of choice**



Community Meal Site

- ❑ Projecting 45,000 meals in 2025
- ❑ Serving 7 days a week
- ❑ Vegetable gardens harvest over 400 pounds annually



Bring & Serve Program

Over 300 days last year had at least 1 meal provided for by volunteers.

Street Outreach Services

- ❑ On the streets daily working with those living unsheltered.
- ❑ Immediate connections to Coordinated Entry Systems.
- ❑ SOAR certified staff.
- ❑ Serves 15 counties.



Christian Care



Project Now

**Over 50 unique contacts in
July 2025 alone.**



Chapel services

**Warming/Cooling
Center**

Public showers

Parish Nurse

Services

**Public resource
lab/library**

Prairie State Legal





2024 EMERGENCY SHELTER

Rescue Mission

222 Men

31 Veterans

1,366 Crisis Logs

Recorded

Martha's House

85 women

24 Children

665 Crisis Logs

Recorded

Meal Site

42,200

Meals Served



Volunteers

Chapel services

Front desk

Meal site

Fundraising committee





humility

HOMES & SERVICES

www.humilityhomes.org





About Us

In **1990**, Humility of Mary Housing, Inc. was founded with the purpose of serving single-parent families.

In **2008**, the City of Davenport asked the Congregation of Humility of Mary (CHM) to take over the local emergency homeless shelter that was renamed Humility of Mary Shelter, Inc.

In **2018**, Humility of Mary Housing, Inc. and Humility of Mary Shelter, Inc. merged, forming the organization known today as Humility Homes & Services, Inc. (HHSI).

Today, HHSI provides emergency shelter, housing, and supportive services to over 1,300 individuals and families.

Mission

Humility Homes and Services, Inc. is committed to ending homelessness by offering housing opportunities and supportive services in the greater Quad Cities.

Vision

A home for every person.



Humility Quick Facts

Started as one property- 4 Units- and we have grown our owned units to over 150 units on both IL and IA sides of the Quad Cities.

Our program began as transitional housing for women and children, but we have expanded and grown to what the community has needed from us. Our entire mission has always only been homelessness and housing.

**Over 1,300 individuals were served in shelter or housing services between July 2024 and June 2025.
*We house more individuals than we shelter every single year.***

Helped reduce Veteran homelessness to a *Net Zero in 2020*; meaning that there is always a bed at our shelter for veterans needing housing.

We celebrate that over 45% of individuals report positive outcomes exiting our emergency shelter, those with not positive outcomes generally need a higher level of care.

HHSI Programs

Street Outreach

Our outreach navigators build relationships with individuals living outside to get a better understanding of their particular barriers to becoming housed. They provide emergency supplies such as water, hygiene products, blankets, and referrals to appropriate service.

Emergency Shelter

HHSI's 80-bed, low barrier, year-round emergency shelter is the Quad Cities' largest and only "housing first" emergency shelter.

Rapid Rehousing

Rapid Rehousing bridges the gap between a housing crisis and housing stability by providing short-term rental assistance and case management. Households who have recently experienced homelessness are quickly rehoused.

Veterans Housing Program & Supportive Services

Veteran services provide shelter, homelessness prevention, rapid rehousing funding and supports to veterans and their households.

Supportive Housing

This program addresses the needs of individuals experiencing recurring homelessness, who may add costs to systems paid for by the public such as hospital emergency departments, short- and long-term behavioral health units, and the criminal justice system.

Mission Focused Housing

HHSI's Mission Focused Housing program assists households who are not eligible for federal and state housing assistance programs, as well as Housing Choice Voucher Program Section 8 holders.

Point in Time Count

PIT is a federally required count every January that is used to understand the scope of homelessness, guide resource allocation, inform policy both federally and locally, and demonstrate the need for funding and services.

The Point in Time Count (PIT) for the Quad Cities Bi-State Region (Scott County, IA and Rock Island County, IL) was **472** in January 2025– including adults and children. **154** were in Rock Island County, – **this number is up 40% over 4 years (2020-2024)**. The most alarming of this number is we saw a **25% increase in the average number of new individuals entering the system this past January**.

When completing the PIT, the individual must provide the zip code of their last permanent address for 90 days or more. This is how you decide what city, county and area of country those experiencing homelessness are coming from.



Along with the PIT count, HUD (and the State of IL) looks at the Housing Inventory Count

- HIC is a point- in- time inventory of provider programs within COC's that provide beds and units dedicated to serving people experiencing homelessness:
 - Emergency Shelter
 - Permanent Supportive Housing
 - Transitional Housing
 - Safe- Haven
 - Rapid Re-Housing

Illinois captures and tracks these data points through the statewide homelessness task force which was created in 2021 by Gov. Pritzker to work to bring our state to a functional zero.

Housing Beds Needed for Functional Zero in the State of Illinois

	Emergency Shelter	Transitional Housing	Rapid Rehousing (RRH)	Permeant Supportive Housing	Total
Current System Capacity (Baseline)	6,769	2,663	3,364	15,072	28,168
Need Based On Model	11,3230	2,006	13,085	21,364	47,775
Housing Unit Need	+4,551	-657	+9,421	+6,292	+19,607

Housing Beds Needed for Functional Zero in the Quad Cities Bi-State Region

Population Component	Current System	Assessed Need	Optimization Gap	Optimization Resource Need
Singles				
Crisis Response	117	412	-295	\$508,874 - \$4,071,000
Moderate (RRH)	52	199	-147	\$2,873,850
Intensive (PSH)	96	432	-336	\$7,534,800
Families				
Crisis Response	40	73	-33	\$56,925 – 683,100
Moderate (RRH)	33	35	-2	\$49,220
Intensive (PSH)	15	75	-60	\$1,614,600
Total Annually				\$12,638,270 - \$16,826,570

Coordinated Entry

There are 19 COC's in Illinois and all 19 are then subdivided into smaller regions for communities to address the systematic issues on a smaller scale.

For the Quad Cities, we are a Bi-State Region, therefore, Scott County Iowa and Rock Island County Illinois team up to address and create solutions for those experiencing homelessness in our community together. For those experiencing homelessness in order to gain services reported in the HIC, the person must be entered into the Coordinated Entry (CE) system.

Coordinated Entry is a CoC-established system-wide process to quickly and equitably coordinate the access, assessment, prioritization and referrals to housing and services for people experiencing or at imminent-risk of homelessness. (definition from HUD)

- Project Now manages the Illinois CE List and Humility Homes & Services manages the Iowa side of the list and the lists are then combined.
- Agencies offer HIC services including HHSI, Project NOW, Salvation Army, Family Resources and Bethany for Children & Family Services.
- Multiple access points are needed for CE. Iowa has them, but Illinois does not.

On any given week, you would find **at least 300 to 350** households waiting for assistance.

What is HHSI currently doing in Rock Island?

- Street Outreach in the downtown primarily around the library.
 - Minimal hours being conducted due to staff capacity
 - 7 currently enrolled in programming– 2 individuals last zip code was 61201
 - Services being provided: clothing, hygiene items, navigation services of substance abuse services and/or mental health services, assistance with obtaining Identification, housing search assistance
 - Veteran's Services
 - Rapid Rehousing Services
 - Affordable Housing

What is HHSI recommendation?

- Fund a 30 hour a week Street Outreach worker employed by HHSI to capture real time data picture.
 - HHSI would work collaboratively with the Rock Island Downtown Partnership similarly to what we currently do with Downtown Davenport Partnership.
 - Street Outreach would cover the entire City of Rock Island as we do in our contract with the City of Moline for our Street Outreach worker paid for by the city.
 - Work daily with the police and ride along with the police when responding to calls regarding those experiencing homelessness
 - We would hold 2 beds in our emergency shelter in Davenport, IA for Rock Island Police Drop-offs
 - We would provide reports to you regarding those that we helped at whatever interval requested by City Council.
 - Request for 3 Years:
 - FY 2025 \$41,887.80
 - FY 2026 \$44,444.10
 - FY 2027 \$47,231.40
- Work with Quad Cities Open Network to fund a full-time Library Social Worker to work with those needing access to Coordinated Entry or other resources while housed and on the verge of entering homelessness and/or work with those who are currently homeless (Please see PowerPoint for QCON)
- Work with the Quad Cities Housing Council on their regional plan to create more affordable housing as outlined in the Silos to Solution Plan and current consultant work locally.

What is HHSI recommendation?

- Expand access to Coordinated Entry through multiple access points such as the Library, the Rock Island School District and/or the Third Place.
- Expand Community Policing efforts to include a dedicated Homeless Liaison worker on the Rock Island Police Force.
- Allow a day center, such as the Third Place, to open for those living unsheltered for them to have a safe place to go for our Street Outreach worker and other social service providers to meet those experiencing homelessness in a safe place. Work with them on ensuring their hours can be more than Monday to Friday and can be more inclusive to be open 7 days a week.
- Along with the Bi-State Regional Commission and HHSI host a one-day summit bringing all the municipalities together for each municipality to take a piece of this puzzle to bring homelessness to a Functional Zero. Examples include:
 - Push for an Encampment to Home Challenge Strategy.
 - Align with the Illinois Interagency Task Force on Homelessness strategies and help create systematic change



““ —

People don't realize that when you have been in a homeless situation for a while, it takes you a while to get back into societal living.

When I had my own place to stay, every worry that I had, just left my body.

Rick

””



At the shelter, they care about you, they will provide you with resources and they will help you get your own place.

*You just need to be willing to help yourself
and accept the support*

Ariel



Contact Us



contact@humilityhomes.org



519 Fillmore Street Davenport



[\(563\) 326-1330](tel:(563)326-1330)



www.humilityhomes.org



**Coordinated Response to
Addressing the Housing Crisis**

**Cecelia Bailey
Executive Director
cbailey@qcopennetwork.org**

THE PROBLEM

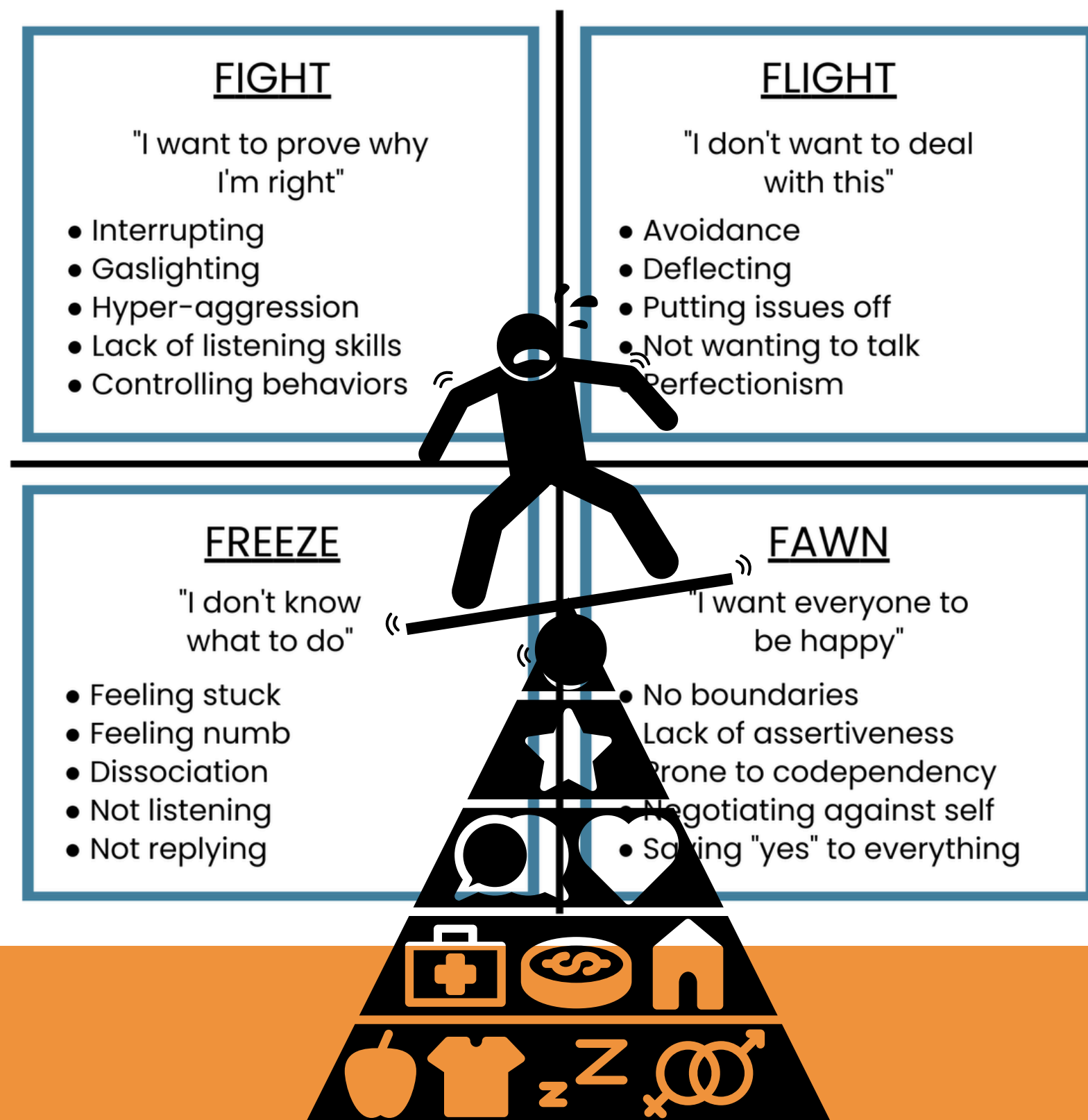
Our partners meet people in flight or fight mode everyday.

It is nearly impossible to effectively communicate our needs in survival mode.

Our stakeholders often seek quick outcomes from transactional relationships.

Homelessness is not solved through transactional relationships. It is solved with trusted relationships, time and sustainable resources.

With a strong collaborative social infrastructure and access to a flexible community fund our partners can mitigate homelessness.



Our Opportunity

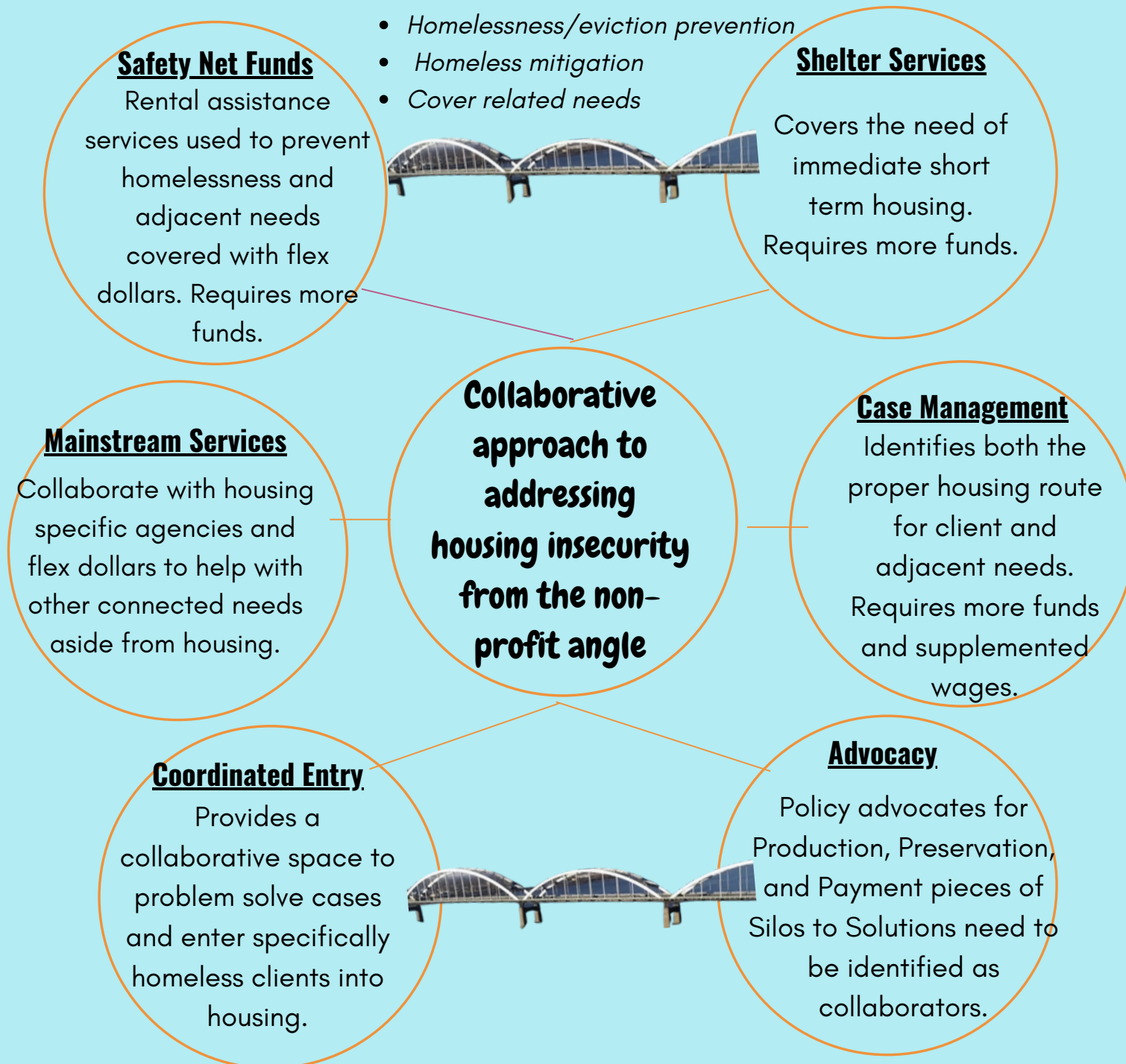
In 2023 QCON held many focus groups to determine barriers rental and housing assistance providers experience in getting clients help.

Main findings:

- **Severe lack of sufficient agency and program funds**
- **Shallow referrals: simply providing a number that may or may not be appropriate resulting in time wasted by all parties**
- **Complete lack of referral process in some cases**
- **Lack of awareness or access to other agency's program eligibility or available services**
- **Practices that simply band-aid issues without addressing root causes and future planning; i.e. utilizing emergency funding without safely net plans or future mitigation plans**

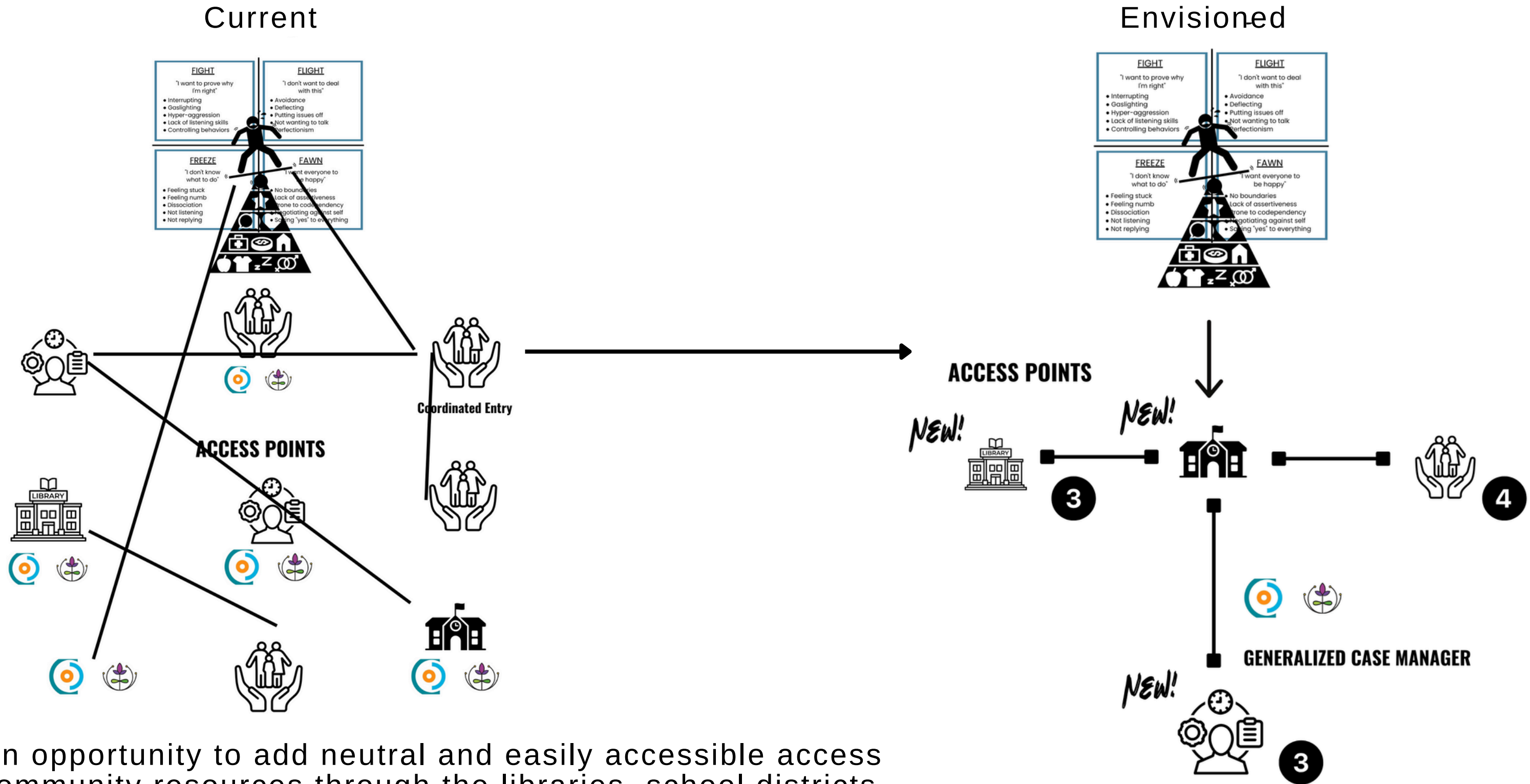
What Will Help

Mapping Housing Collaboration



- Greater funds available to the sector for housing
- Clearer referral protocols for homelessness diversion (program info and eligibility requirements viewable in IRIS to assist with determining appropriateness of service)
- Pool of flexible funds available to all agencies to offset programs with hyper-strict and often government mandated eligibility rules for miscellaneous needs of those waiting on the Coordinated Entry (CE) list, and miscellaneous and rental assistance for those ineligible for CE
- Stand down payments to landlords from flex fund allowing time to process assistance and configure the best route for the client

Our Opportunity



We have an opportunity to add neutral and easily accessible access points to community resources through the libraries, school districts, and participating service providers.

If the actions we are taking are not getting us to our goal of limiting homelessness, we need to adjust our actions. These are simply suggested starting points in trying to make a change towards more effective processes. It will likely take shifting and adjusting to improve.

In their research study titled, [Learning from Emergency Rental Assistance Programs: Lessons from Fifteen Case Studies](#), Aiken et al. (2021) claim, “One clear overarching theme that applied to all sites was that administrators needed to adjust programs over time as challenges inevitably arose, even with well-crafted programs.” Still, we need to get moving towards some sort of solution, even if it may not be perfect or may need to be adjusted as we go! The issues and needs are clear - it’s time to act towards solutions.